

# FOCUS

News and action from your local Liberal Democrats

[www.aldershotlibdems.org.uk](http://www.aldershotlibdems.org.uk) [www.libdems.org.uk](http://www.libdems.org.uk)

## In This Issue . . .

- [Placeholder text]
- [Placeholder text]
- [Placeholder text]
- [Placeholder text]
- [Placeholder text]
- [Placeholder text]

# Coping with severe winters

This is now our third winter in a row with severe weather and snow. It's beginning to look as though we'll have to get used to it!

[Placeholder text]

[Placeholder text]

[Placeholder text]

[Placeholder text]

[Placeholder text]

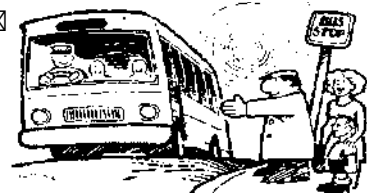


[Placeholder text]

# Tories cut bus pass use

Lib Dems are fighting decisions to stop pensioners using bus passes before 9.30am on weekdays and to cut travel tokens for people with disabilities from £55 to just £32.

[Placeholder text]



[Placeholder text]

[Placeholder text]

[Placeholder text]

[Placeholder text]

[Placeholder text] These cuts must be stopped!



Friendly legal services  
at affordable rates

- Conveyancing
- Company & Employment
- Wills & Probate
- Civil Litigation
- Family

We take credit & debit cards






Members: Rebecca Hawksley LLB(Hons), Solicitor, Member of Resolution  
Elaine Liddle LLB(Hons), Solicitor  
Jacqueline Roberts SoELC, Licensed Conveyancer  
Limited Liability Partnership, registered in England & Wales No. DC358821  
Regulated by the Solicitors Regulation Authority

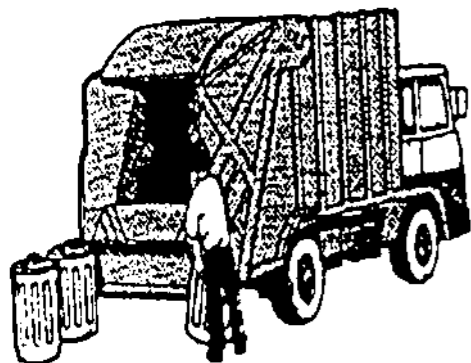
The Hawksley  
Partnership  
LLP

32 Bladen Court  
Bell Lane, Blackwater  
Surrey GU17 0NW  
Tel: 01252 890400  
[reception@thehawksleypartnership.com](mailto:reception@thehawksleypartnership.com)  
[www.thehawksleypartnership.com](http://www.thehawksleypartnership.com)

# Residents thank cold weather workers

Thanks must go to refuse collectors who ventured out in dangerous conditions to collect our rubbish whenever they could.

It is a testament to the dedication of our refuse collectors that they have continued to work in such harsh conditions. Their efforts ensure that our streets remain clean and safe for everyone.



The weather has been particularly challenging, but our workers have shown exceptional resilience. They have worked tirelessly to ensure that our waste is collected and disposed of properly.

Our residents are grateful for the hard work and dedication of these brave individuals. They have kept our community clean and safe during these difficult times.

The council would like to express its appreciation for the commitment and hard work of all our refuse collectors.

It is a true credit to our workers that they have continued to provide a high standard of service despite the adverse weather conditions. Their dedication is a source of pride for our community.

We will continue to support our workers and ensure that they have the resources and equipment they need to do their jobs safely and effectively. Thank you for your continued support.

The council is committed to ensuring that our workers are safe and supported. We will continue to monitor the weather and adjust our operations accordingly.

Our refuse collectors are the backbone of our community, and we are proud to have such dedicated professionals working for us. Their hard work makes a real difference to our lives.

The council will continue to work closely with our workers to ensure that they have everything they need to do their jobs. We will also continue to provide regular updates on our services.

It is a pleasure to have such a dedicated team of workers who go above and beyond to provide a high standard of service. We will continue to support them in every way possible.

The ability to run when it rains comes to mind... We will continue to support our workers and ensure that they have the resources and equipment they need to do their jobs safely and effectively.

# Not just ice, but mud on our roads too!

There is mounting anger about mud on our roads from lorries from R Collard's tipping operations in Sandhurst Road.

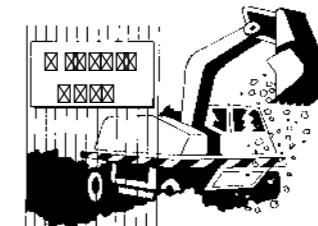
The mud is causing significant damage to our roads and is a major safety hazard. Residents are frustrated that the council has not taken any action to address the problem.



The council is aware of the problem and is working to identify the source of the mud. We will continue to monitor the situation and take action if necessary.

Residents are encouraged to report any mud on their roads to the council. We will investigate any reports and take appropriate action. We will continue to work closely with our residents to ensure that our roads are safe and clean.

The council is committed to ensuring that our roads are safe and clean. We will continue to monitor the situation and take action if necessary. We will continue to work closely with our residents to ensure that our roads are safe and clean.



The council is aware of the problem and is working to identify the source of the mud. We will continue to monitor the situation and take action if necessary. We will continue to work closely with our residents to ensure that our roads are safe and clean.

The council is committed to ensuring that our roads are safe and clean. We will continue to monitor the situation and take action if necessary. We will continue to work closely with our residents to ensure that our roads are safe and clean.

The council is aware of the problem and is working to identify the source of the mud. We will continue to monitor the situation and take action if necessary. We will continue to work closely with our residents to ensure that our roads are safe and clean.

The council is committed to ensuring that our roads are safe and clean. We will continue to monitor the situation and take action if necessary. We will continue to work closely with our residents to ensure that our roads are safe and clean.

The council is aware of the problem and is working to identify the source of the mud. We will continue to monitor the situation and take action if necessary. We will continue to work closely with our residents to ensure that our roads are safe and clean.

<http://www3.hants.gov.uk/planning/mineralsandwaste/planning-applications/applications/application-details.htm?id=14343>

## Labour's waste of YOUR money comes to an end:

# ID Cards GONE!

Labour's expensive and wasteful Identity Cards scheme has been axed by the new Government. This saves £835 million that would have come from YOUR taxes.

All existing ID cards are invalid from 21 January, and the National Identity Register database, including photos and fingerprints, will be destroyed on 21 February.

It had been feared Labour would make Identity Cards compulsory. Labour's Big Brother law allowed over 50 items of personal information to be held on the National Identity Register, with 48,000 private companies having access to the database. And we'd all have had to pay £60 for the card. It's a good job Labour didn't get back to do all this!



● Lib Dems campaigned at the last election for ID cards to be axed

Advertising is sold on a purely commercial basis. Advertisers do not necessarily support the Liberal Democrats or the editorial policy of FOCUS.

**BRIAN BLEWETT FCA**  
If you have a business and you need an accountant to prepare your accounts and deal with your tax affairs, please contact me for a free introductory meeting.  
**Tel: 07748 720083**  
**Or: 01276 509146**  
**brian.blewett@ntlworld.com**  
You will find that my charges are very reasonable.

**Potley Hill Community Preschool**  
Invites you to visit our fantastic new setting on the Frogmore Campus  
Call 01252 869944 for an appointment  
o ICT zone with PCs and interactive whiteboard  
o Secure garden and our own allotment  
o Brand new "little ones" library and role play areas  
o New food technology area  
o Excellent Ofsted report  
Potley Hill Road, Yateley, Hants, GU46 6AG  
01252 869944 email: potleyhill.preschool@yahoo.com  
www.potleyhill-preschool.hampshire.org.uk

**UK CURTAIN COMPANY**  
CURTAINS - BLINDS - FABRICS  
ALL AT 'DISCOUNT PRICES'  
FOR FREE ESTIMATES - PHONE:  
Camberley Office **01252 876609**  
Basingstoke Showroom **01256 329939**  
FOR ALL YOUR CURTAIN NEEDS  
OR VISIT OUR SHOWROOM AT:  
1st Floor Unit 19, Moniton Trading Estate,  
West Ham Lane, Basingstoke, RG22 6NQ

**Electrician**  
Part P Certified  
From a socket to a rewire  
The solution to your electrical problems  
**Gerry Trainor**  
Tel: 01252 870458  
Mobile: 07976 697082  
Cuckoo Cottage, Stroud Lane, Blackwater, GU17 0AW

**Travallen Travel and Events**  
• Concerts, Theatres, Shows  
• Day Tours, Mini Breaks  
• Group Arrangements  
• Private Occasions  
• Corporate Events  
Telephone NOW for a FREE EventGuide, GroupGuide and ShortBreak Guide  
Travallen Travel & Events,  
9 Aylesham Way, Yateley, Hants GU46 6NR  
Tel: (01252) 877103  
Email: [events@travallen.co.uk](mailto:events@travallen.co.uk)  
Visit our website: [www.travallen.co.uk](http://www.travallen.co.uk)

## Pothole compensation payouts soar by 85%

The number of pothole compensation claims has risen sharply, reflecting the poor state of our roads. This is a significant increase from previous years, highlighting the need for better road maintenance.

That's £111,000 of our council tax paid out in compensation!

The council is aware of the problem and is working to identify the source of the mud. We will continue to monitor the situation and take action if necessary. We will continue to work closely with our residents to ensure that our roads are safe and clean.

The council is committed to ensuring that our roads are safe and clean. We will continue to monitor the situation and take action if necessary. We will continue to work closely with our residents to ensure that our roads are safe and clean.

The council is aware of the problem and is working to identify the source of the mud. We will continue to monitor the situation and take action if necessary. We will continue to work closely with our residents to ensure that our roads are safe and clean.



Our roads and pavements are in a dreadful state

The council is aware of the problem and is working to identify the source of the mud. We will continue to monitor the situation and take action if necessary. We will continue to work closely with our residents to ensure that our roads are safe and clean.

**YOUR  
YATELEY NORTH  
LIBERAL DEMOCRAT  
FOCUS TEAM**

**David Simpson**  
(District & County Councillor)  
Tel: 01252 874459  
david.simpson9@ntlworld.com

**Colin Ive**  
(District Councillor)  
Tel: 01252 878276  
colin.ive@smecontinuity.com

**Dave Neighbour**  
(Hart Lib Dem Leader)  
Tel: 07540 607028  
neighbod@aol.com

**Don Benham**  
(Town Councillor)  
Tel: 01252 874274

**Greg Easterbrook**  
(Town Councillor)  
Tel: 01252 873444  
greg.easterbrook@yahoo.co.uk

**John Keane**  
(Town Councillor)  
Tel: 01252 681356  
jkeane43@hotmail.com

**Andy Whitaker**  
(Town Councillor)  
Tel: 01252 661363  
andywhitaker@ntlworld.com

Contact any member of the  
Focus Team with any local  
problem or to find out more  
about the Liberal Democrats

**Blocked sewers  
warning!**

In recent months there have been a number of sewer blockages caused by flushing inappropriate materials down lavatories.



Household and baby wipes, cotton buds and so on, and even cooking fat down the sink, have all caused blockages.

A sewage surcharge is serious and no-one wants it to happen to them, so please ensure no-one in your house is doing this!

**Local News**



**Waitrose Car Park Success**

Town councillors regularly meet Yateley Police to sort out local crime and anti-social behaviour issues.



One issue they have recently tackled is the anti-social behaviour and "joyriding" in the Waitrose car park which has gone on for years. As a result, barriers have now been installed, and the difference is already clear.

First Yateley Town Council put in bollards to cut off one of the "joyriding" escape routes and then Waitrose installed a barrier which enables them to close off their section of the car park at night. Cost-effective and simple!

**Road Closure for new Water Main installation**



Reading Road will be closed from the roundabout by Frogmore Community College through to the A30 for several months this spring.

South East Water are laying a new larger 600mm (24") water main to cope with growing demand in the area. The work is expected to take 18 weeks.

Clearly this is going to have a great impact on our travel patterns during this time. Traffic will be diverted along the A30 and then down Cricket Hill, but there is likely to be a lot of rat-running through local roads as well.

**New "Hart Shopper" Community Bus Launched**



If you struggle to use an ordinary bus, or if the bus stop is just too far away, then you are entitled to use the new "Hart Shopper" bus to The Meadows and Camberley.

The bus runs every second Friday - 14th and 28th January, 11th and 25th February, 11th and 25th March, and so on.

The Hart Shopper collects people from their homes in Eversley, Yateley, Frogmore, Blackwater and Hawley and takes them to The Meadows and Camberley by 10 am and then returns at 12 noon.

You need to book your seat in advance and by noon the day before you travel at the latest. Call 0845 602 4135 for more information or to book. The cost is £5 for a return trip, or £2.50 with a concessionary bus pass.

**Road to Cemetery to remain potholed**

The road to Heathlands Cemetery has been in a poor state in recent years. Officially it is really a bridleway which was illegally tarmacked many years ago. Common sense tells us that it should be made into a proper highway so that it can be resurfaced properly. It is shameful that families following their loved ones on their final journeys have to endure watching the hearse being jolted by the potholes.

So Hampshire Highways were asked to take this over, and all agreed that this was the right solution. Except the Conservative Cabinet member responsible - who has ruled that Highways will not take the road over, so making it impossible to resurface it properly without breaking the law.

Local Lib Dem councillors will continue to fight this heartless decision!